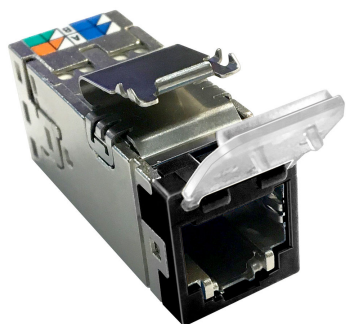


# 2153365-2 | AMP-TWIST SLX, 6AS W/DC, BLK



AMP-TWIST SLX Series Modular Jack, category 6A, shielded , 4 Pair, with dust cover, black

## Product Classification

### Regional Availability

Asia | Australia/New Zealand | EMEA | Latin America

### Portfolio

NETCONNECT®

### Product Type

Modular jack

### Product Series

SLX Series

## General Specifications

### ANSI/TIA Category

6A

### Cable Type

Shielded

### Color

Black

### Conductor Type

Solid | Stranded

### Mounting

SL Series faceplates and panels

### Mounting Note

Color matches with SL-style Black Faceplates and Surface Mount Boxes

### Outlet Type

Standard

### Panel Cutout, recommended

14.78 x 20.07 mm (0.58 x 0.79 in)

### Termination Tool

SL Termination tool

### Termination Type

IDC

### Transmission Standards

ANSI/TIA-568-C.2 | ISO/IEC 11801 Class EA

### Wiring

T568A | T568B

## Dimensions

### Height

16.13 mm | 0.635 in

### Width

14.44 mm | 0.569 in

### Depth

36.8 mm | 1.449 in

### Compatible Cable Diameter, maximum

8.5 mm | 0.335 in

# 2153365-2 | AMP-TWIST SLX, 6AS W/DC,BLK

<b>Compatible Insulated Conductor Diameter, maximum</b>	1.6 mm   0.063 in
<b>Contact Plating Thickness</b>	1.27 µm
<b>Panel Thickness, recommended</b>	1.6 mm   0.063 in
<b>Compatible Conductor Gauge, solid</b>	26–22 AWG
<b>Compatible Conductor Gauge, stranded</b>	26–24 AWG

## Electrical Specifications

<b>Remote Powering</b>	Fully complies with the recommendations set forth by IEEE 802.3bt (Type 4) for the safe delivery of power over LAN cable when installed according to ISO/IEC 14763-2, CENELEC EN 50174-1, CENELEC EN 50174-2 or TIA TSB-184-A
------------------------	---

## Material Specifications

<b>Contact Base Material</b>	Beryllium copper
<b>Contact Plating Material</b>	Gold
<b>Material Type</b>	Polycarbonate   ZMAC 5

## Environmental Specifications

<b>Operating Temperature</b>	-10 °C to +60 °C (+14 °F to +140 °F)
<b>Flammability Rating</b>	UL 94 V-0

## Packaging and Weights

<b>Packaging quantity</b>	24
<b>Packaging Type</b>	Bag   Box

## Regulatory Compliance/Certifications

<b>Agency</b>	<b>Classification</b>
CHINA-ROHS	Below maximum concentration value
RCM	Compliant to electrical safety, EMC, EME & telecommunications requirements
REACH-SVHC	Compliant as per SVHC revision on <a href="http://www.commscope.com/ProductCompliance">www.commscope.com/ProductCompliance</a>
ROHS	Compliant

